

Black Warrior Basin Mississippi and Alabama 586,000± acres



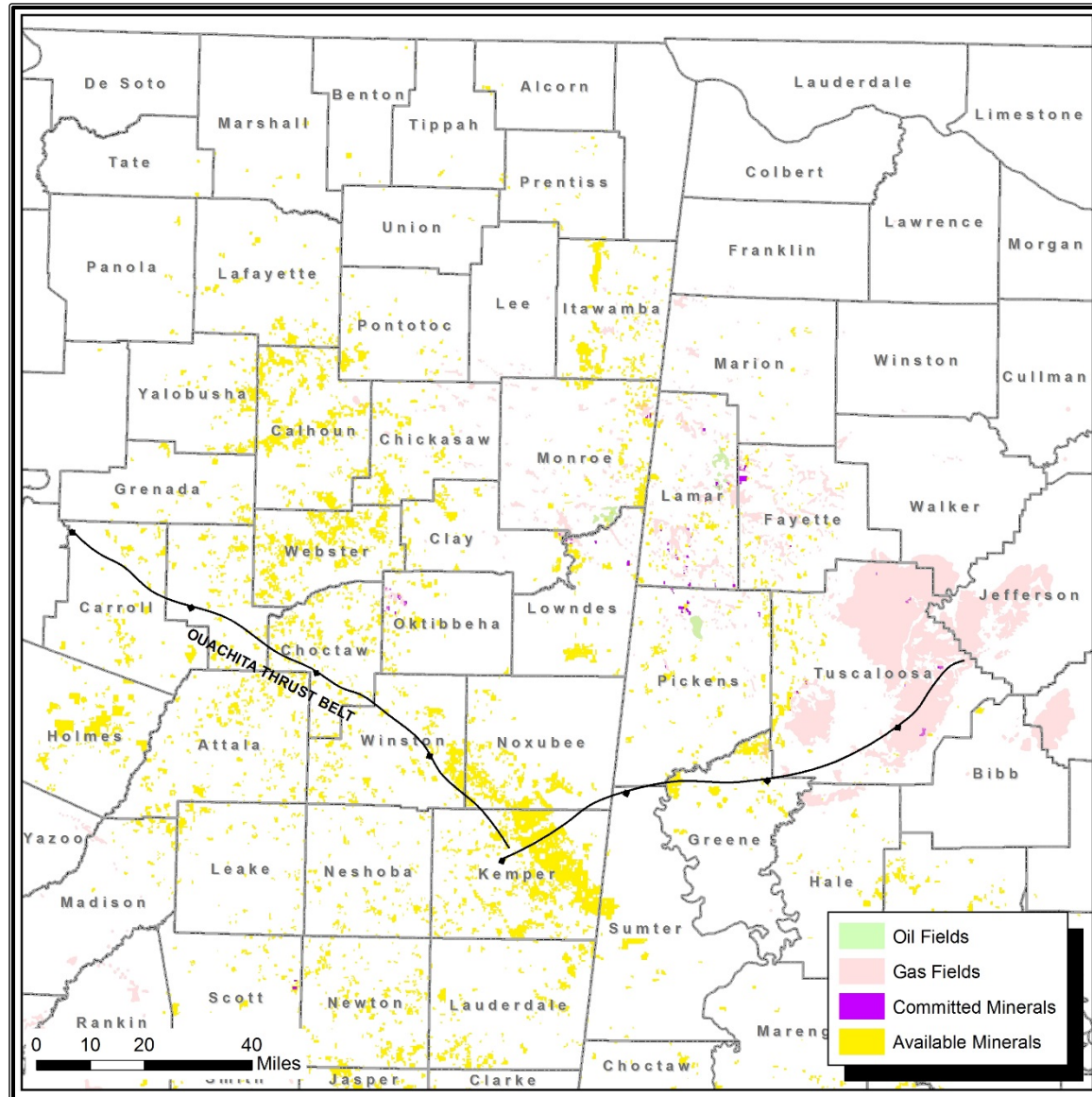
Weyerhaeuser is soliciting
lease/option offers at
market rates

Technical Presentations Available Upon Request

This information is not intended to be and should not be interpreted to be an exclusive offer to your company. Unless and until an Option/Lease Agreement or binding letter of intent has been executed between your company and Weyerhaeuser, neither your company nor Weyerhaeuser will be under any legal obligation whatsoever to conclude a transaction. Weyerhaeuser reserves the right, at its sole discretion, to reject any and all offers and to terminate discussions concerning a potential transaction at any time without liability or obligation of any nature whatsoever.

**Contact: Pamela J. Reed, CPL
Land Manager – Energy & Natural Resources
(206) 539-4432**

Pamela.Reed@Weyerhaeuser.com



Executive Summary: Black Warrior Basin Mississippi & Alabama

Play Concepts:	Miss. & Penn. fluvial-deltaic sandstones, Ordovician dolomites trapped on horst blocks and thrust faulted anticlines.
Drill Depths:	Miss. Floyd Shale Resource Play 3,500' to 15,000'
Reserve Potential:	Miss. & Penn: Multiple 50 BCFG and 2 MMBO Fields M. Ordovician: Multiple 100 BCFG Fields

Basin Summary: The Black Warrior Basin is a mature, 1 TCFG, primarily gas producing province with P50 reserves of roughly 50 BCF per field. The largest producing field to date, the Corinne Field in Monroe & Lowndes Counties, MS, has an EUR of 205 BCFG, and produces from shallow Penn. & Miss. sandstones. Several small to mid-size shallow oil fields also exist in the Basin with reserves on the order of 1 to 6 MMBO. Also noteworthy is gas production in the Maben Field, located in Oktibbeha County, MS. The Maben field produces from the M. Ordovician "Snow Zone" dolomite, at depth of 13,000', and has an EUR of 102 BCFG.

Weyerhaeuser Assets: Weyerhaeuser has compiled large, proprietary data sets consisting of:

- 2,850 miles of 2D Seismic Data
- 100+ seismically defined prospects and leads
- Basin wide seismic and geologic mapping for all prospective horizons
- Floyd and Chattanooga Shale Resource Play evaluation and mapping
- Proprietary geochemical and geological basin studies
- Well logs

Recent Developments/Future Potential:

Miss. Floyd, Dev. Chattanooga Shale: Since 2008, roughly 15 vertical wells, and 5 short horizontal wells have been drilled to test the Floyd and Chattanooga organic shales. Although core data indicates the gas resource is present, high clay contents have inhibited commercial rates. More work is necessary to assess resource potential.

Penn. Oil Discovery: In the Chicken Swamp Branch Field of Pickens County, AL, some 50 shallow oil wells are currently producing commercial reserves from the Pottsville A sandstone, at a depth of 4,500'. Several development wells are currently drilling, and estimated Field reserves could top 2 MMBO.

Weyerhaeuser's basin-wide mapping, utilizing proprietary geologic and geophysical data has identified multiple prospects and leads, that are structurally and stratigraphically similar to existing fields in the basin. These prospects and leads have 50+ BCFG and 2MMBO potential.